

IN1 Projector

InFocus

Quick Start and Reference Guide



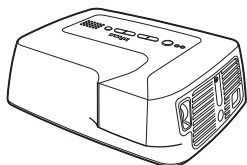


Please read the safety instructions booklet before setting up the projector.

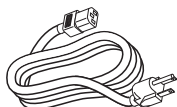
1

Unpack the box

Here's what's included:



Projector



Power Cord

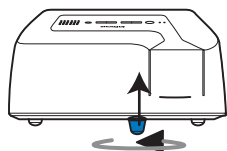
i

Audio/video cables are not included. You can buy them at www.infocus.com/store or from your local electronics retailer.

2

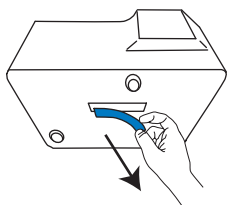
Connect expansion module (if purchased with projector)

i Make sure the projector is turned off and the power cord is unplugged before connecting or disconnecting a module.



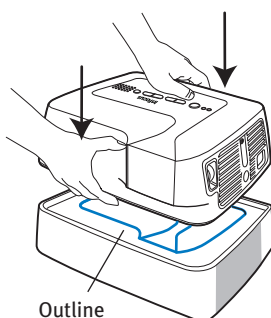
1 Completely retract the projector's elevator foot (if needed)

The foot is under the front of the projector.



2 Remove the rubber connector cover from the bottom of the projector

Save it in case you disconnect the module later.



3 Look at the outline on top of the module to correctly position the projector

4 Snap the projector down onto the module

Press down until you hear a 'click'.

3

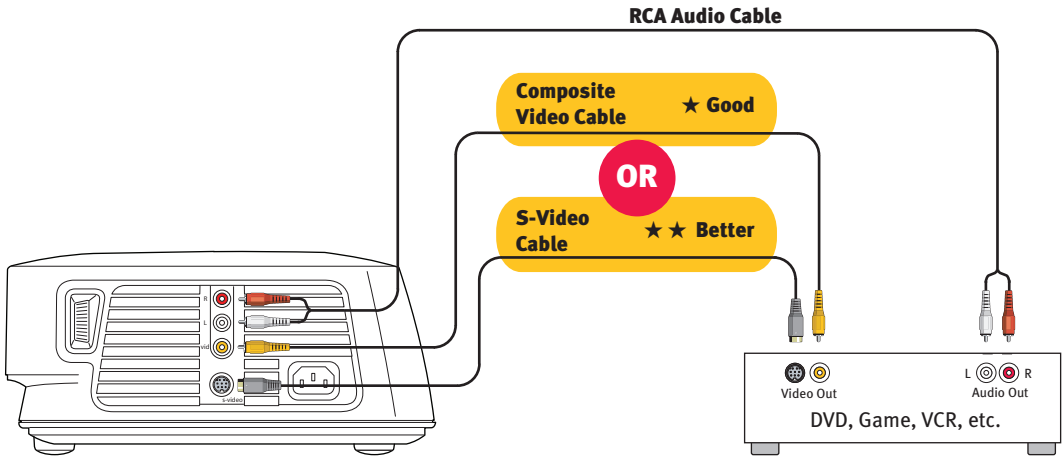
Connect to the video source (DVD player, game console, VCR, etc.)

1 Connect video with a **Composite Video Cable (good)** or an **S-Video Cable (better)**

www.infocus.com/store part number **SP-CPSTVID-5M** or **SP-SVIDEO-10M**

2 Connect audio with an **RCA Audio Cable**

www.infocus.com/store part number **SP-RCAAUD-5M**



Note: Your video source may look different. Look for color-coded connections.



Some expansion modules may include additional connectors

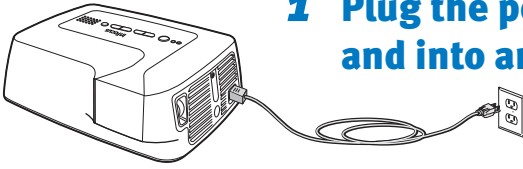
See the module's Reference Guide for more information.

Connect to component video sources with an s-video to component video adapter. www.infocus.com/store part number **SP-VIDEO-ADPT**

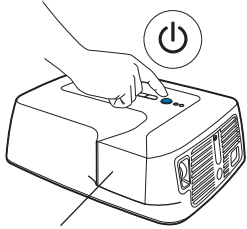
How-To Guides with instructions for connecting other types of sources are available at www.infocus.com/service/howto

4

Plug in and turn on the projector



- 1 Plug the power cord into the projector and into an electrical outlet



Lens

- 2 Press the power button



The wait light will blink until the lamp turns on.



- 3 Wait for the projector lamp to turn on

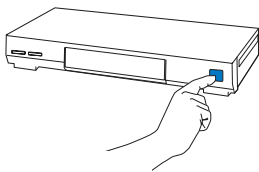
It can take a minute for the projector lamp to reach full brightness.



Warning: Do not look directly into the lens when the projector is turned on.

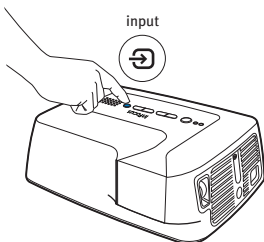
5

Turn on the video source and show the picture



- 1 Turn on your DVD player, game console, VCR, etc.

Note: If an expansion module is connected, it turns on automatically when the projector is on.



- 2 No picture? Press the input button to switch between video inputs

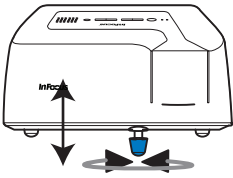
You may need to press it several times. Wait a few seconds between each press.



If there's still no picture or sound, see **Troubleshooting**.

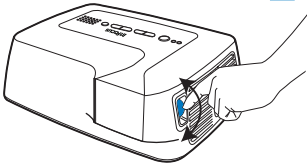
6

Adjust the picture



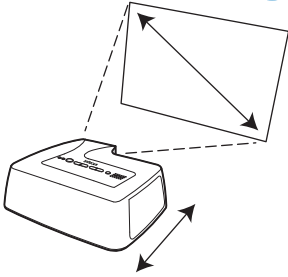
1 Height

Turn the elevator foot under the front of the projector or expansion module.



2 Focus

Turn the focus dial on the side of the projector.



3 Size

To get a picture this size (diagonally)...

the projector must be this far away:

60" / 1.5m

7'7" / 2.3m

80" / 2m

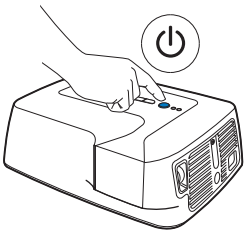
10'1" / 3.1m

92" / 2.3m

11'7" / 3.5m

7

Turn off the projector



Hold down the power button until the projector lamp turns off

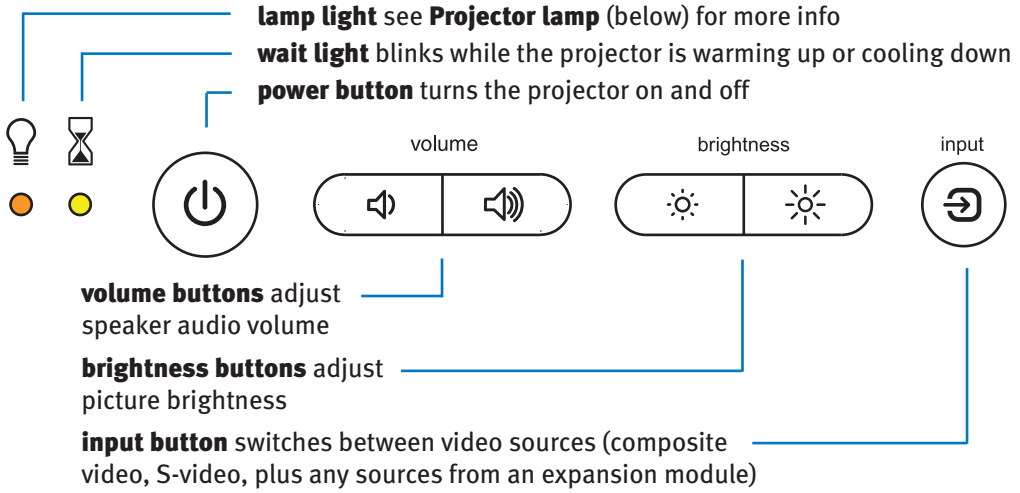
The wait light will blink while fan cools the lamp.

Note: The projector won't respond to commands while the wait light is blinking.



Don't unplug the projector until the wait light stops blinking.

Projector controls and status lights



Projector lamp

The projector's lamp has a lifetime of 1000 hours.



Lamp light

Turns on when remaining lamp life is low, or when lamp life has expired (also turns on if the lamp unexpectedly fails).



Low lamp symbol

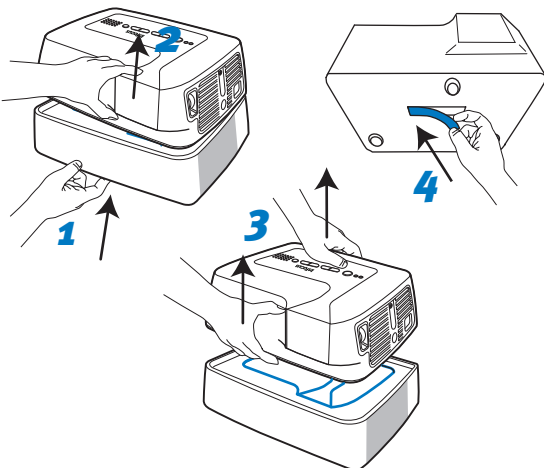
Shown on screen when remaining lamp life is critically low.

To buy a new lamp, go to www.infocus.com/store

Before replacing the lamp, unplug the projector and wait 1 hour.

Detailed instructions are included with the replacement lamp.

Disconnecting an expansion module



Place the module on a firm flat surface and turn off and unplug the projector.

- 1** Press in the release button under the front of the module.
- 2** Lift the front of the projector up slightly.
- 3** Lift the projector completely off the module.
- 4** Replace the rubber connector cover on the bottom of the projector.

Troubleshooting

No picture or sound, bad picture, or “InFocus” is shown



Make sure the projector is on. Press the **power button** to turn on the projector.



Check the video source and cables. Make sure the video source (DVD player, VCR, etc.) is turned on and all cables are securely connected between the video source and the projector.

input



Press the input button. You may need to press it several times to see the correct video source. Wait a few seconds after each press.

Projector won't turn on



Check the power cord. Make sure it is plugged into the projector and a live electrical outlet.



If the lamp light is on, unplug the power cord, wait one minute, then plug it in again. If the projector beeps and the lamp light turns on again right away (before you turn on the projector), then the lamp needs to be replaced. Buy a new lamp at www.infocus.com/store



If the wait light is blinking, the projector is warming up or cooling down. Try again after the wait light turns off.



If an expansion module is attached to the projector, make sure the module is securely and correctly attached to the projector.

Projector turned off by itself



If the temperature symbol was shown before the projector turned off, the projector was too hot. Make sure nothing is blocking vents on the sides or bottom of the projector (and any expansion module). Wait at least one minute before turning the projector back on.



If there is no signal from the selected video source, the projector will turn itself off after 20 minutes.



If the lamp light is on, see **Projector won't turn on** (above). **Note:** If the projector is still working but the lamp light is on, remaining lamp life is low.



Low lamp symbol is shown



Remaining lamp life is critically low. The lamp should be replaced soon. Buy a new lamp at www.infocus.com/store

Module error symbol is shown



The expansion module is not correctly communicating with the projector. Turn off and unplug the projector, disconnect and re-connect the expansion module, then plug in the projector and turn it back on. If the symbol is still shown, contact InFocus service at www.infocus.com/service **Note:** To use the projector alone, disconnect the module.



Warning: In the unlikely event of a lamp rupture, particles may be ejected from the projector. Keep out of the area under and around the projector when it is turned on. See the safety instructions booklet for more details.

Questions? We're here to help!

Visit us at:
www.infocus.com/service

We're here to support you with your new purchase. We can help you with...

- Determining screen sizes
- Documentation in other languages
- Connecting your sources (TV, DVD, Cable/Satellite, Game, etc.)
- Selecting optional accessories
- Product warranty protection plans

USA, Canada, Latin America

Customer Support Telephone

+1 (503) 685-8888

TOLL FREE: **800-799-9911**

Mon-Fri, 7 am - 5 pm Pacific

techsupport@infocus.com

Asia Pacific

Customer Support Telephone

Singapore: **800-101-1864**

China: **800-828-2268**

Australia: **1800-630-957**

New Zealand: **0800-449-854**

Mon-Fri, 9 am - 5 pm SGT

asia-support@infocus.com

Europe, Middle East, Africa

Customer Support Telephone

+31 (0)36 539 2820

Mon-Fri, 08:30 - 18:00 CET

emea.support@infocus.com

Warning: Hg - Lamp contains mercury. Manage in accordance with local disposal laws. See www.lamprecycle.org

Declaration of Conformity

Manufacturer: InFocus Corporation, 27500 SW Parkway Ave. Wilsonville, Oregon 97070-8238 USA

European Office: Louis Armstrongweg 110, 1311 RL Almere, The Netherlands

We declare under our sole responsibility that this projector conforms to the following directives and norms: EMC Directive 89/336/EEC, Amended by 93/68/EEC, EMC: EN 55022, EN 55024, EN 61000-3-2, EN 61000-3-3, Low Voltage Directive 73/23/EEC, Amended by 93/68/EEC, Safety: IEC 60950-1:1st Edition

Trademarks

InFocus, In Focus, and INFOCUS (stylized) are either registered trademarks or trademarks of InFocus Corporation in the United States and other countries.

FCC Warning

Note: This equipment has been tested and found to comply with the limits for a Class B digital device, pursuant to part 15 of the FCC Rules. These limits are designed to provide reasonable protection against harmful interference in a residential installation. This equipment generates, uses and can radiate radio frequency energy and, if not installed and used in accordance with the instructions, may cause harmful interference to radio communications. However, there is no guarantee that interference will not occur in a particular installation. If this equipment does cause harmful interference to radio or television reception, which can be determined by turning the equipment off and on, the user is encouraged to try to correct the interference by one or more of the following measures:

- Reorient or relocate the receiving antenna.
- Increase the separation between the equipment and receiver.
- Connect the equipment into an outlet on a circuit different from that to which the receiver is connected.
- Consult the dealer or an experienced radio/TV technician for help.

Changes or modifications to this equipment that are not expressly approved by InFocus Corp. may void the user's authority to operate the equipment.

Canada

This Class B digital apparatus complies with Canadian ICES-003.

Cet appareil numérique de la classe B est conforme à la norme NMB-003 du Canada.

Agency Approvals Product Models: G300-WW

Nationally Recognized Testing Laboratory — Canadian Standards Association

Other specific Country Approvals may apply. Please see product certification label.

InFocus reserves the right to alter product offerings and specifications at any time without notice.