

## LiteShow II

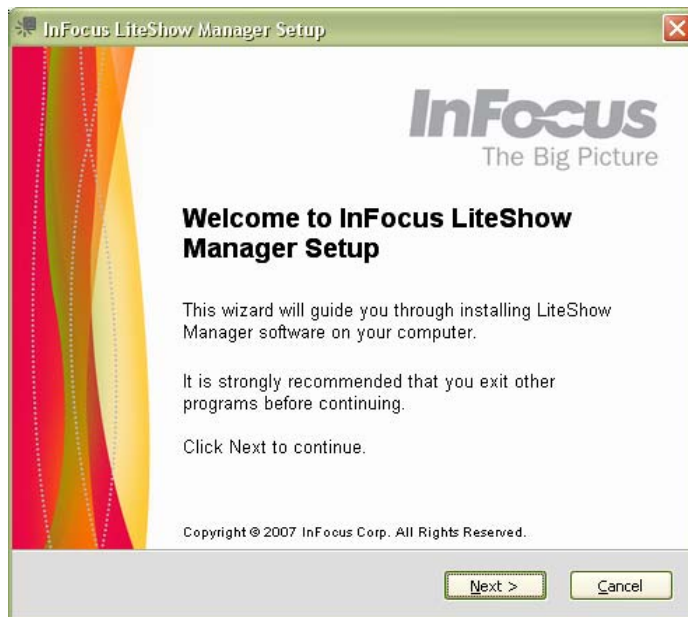
### Installing version 2.10 upgrades for the LiteShow Manager and Module

1. After you have downloaded the “LSII\_v2\_10.exe” file, you will need to uninstall any previously installed versions of LiteShow Manager. This can be accomplished by navigating to “Start -> Control Panel -> Add or Remove Programs, and selecting the entry labeled “InFocus LiteShow Manager”, and then clicking the Change/Remove button and following the on-screen prompts.

If you attempt to install the upgrade without uninstalling previous versions of LiteShow Manager, you will see the uninstall reminder pictured below.



2. Once you have uninstalled any previous version and have restarted your computer, you may begin the installation of the upgrade by double-clicking the “LSII\_v2\_10.exe” file. This will extract the installation files into the directory path you choose (the default path is: C:\Liteshow\_II).
3. Navigate to the directory selected in the previous step and double click the “LiteShow\_Setup.exe” file. This opens the LiteShow Manager install wizard. Follow the steps of the installation wizard.



(1<sup>st</sup> step)



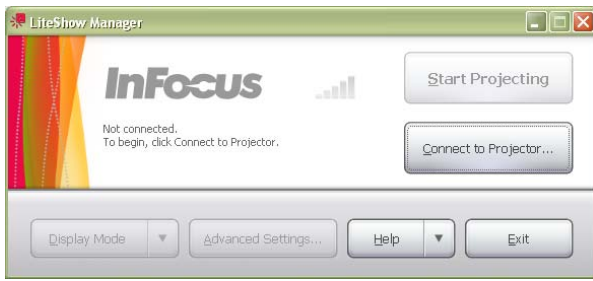
(6<sup>th</sup> step)

LiteShow Manager Version 2.10 is now installed.

*If the module(s) have already been upgraded then the installation is complete.*

Continue to the next step if your LiteShow II module(s) have not been upgraded to version 2.10.

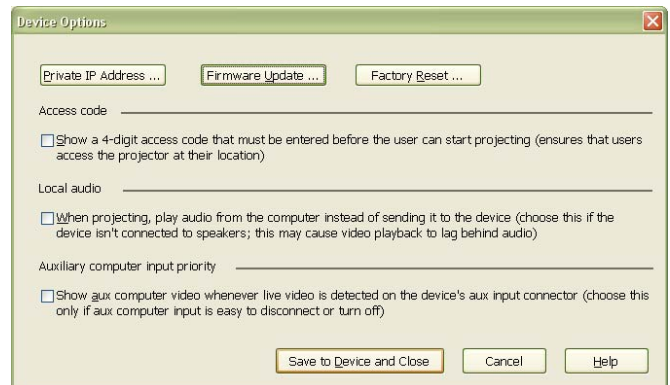
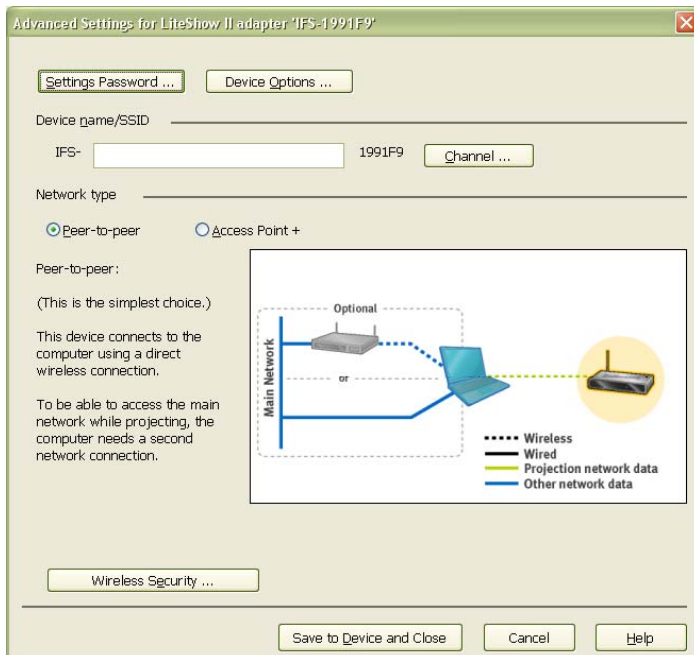
4. Open LiteShow Manager version 2.10 from the desktop shortcut created during installation and click the “Connect to Projector...” button, then highlight the correct LiteShow II module and select “Connect”.



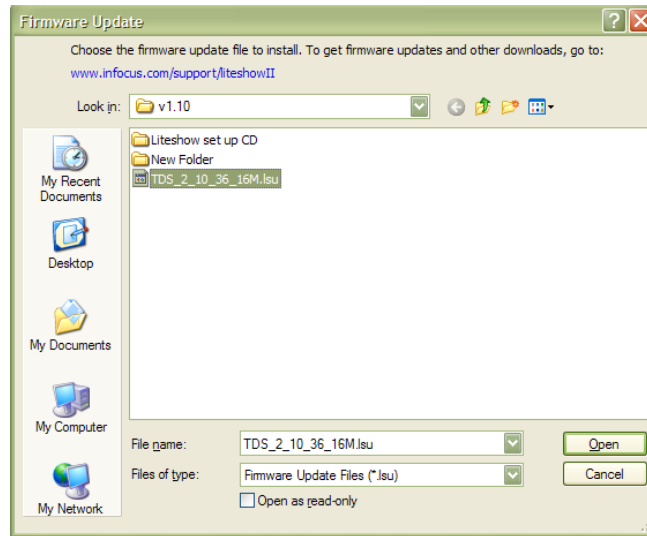
5. Once you’ve connected, select the “Advanced Settings” button



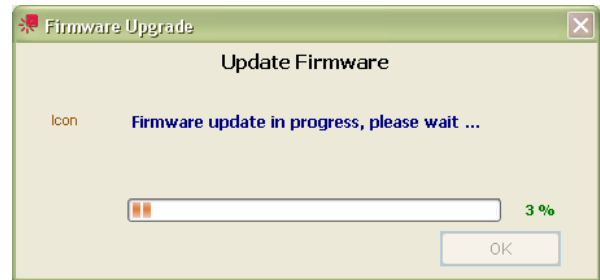
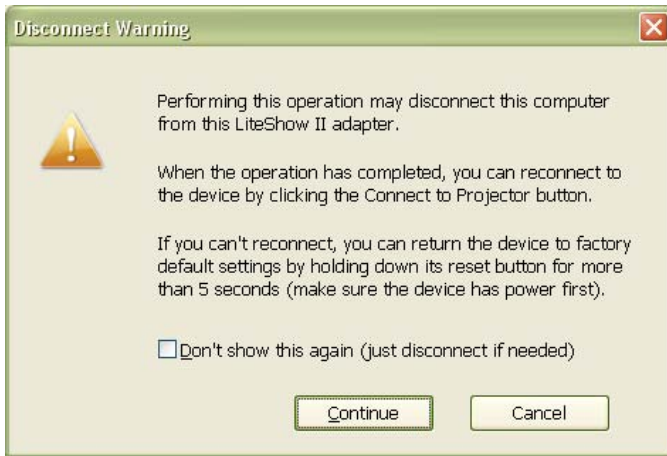
6. Select “Device Options” button, then the “Firmware Update” button.



7. Select the LiteShow II module upgrade file (TDS\_2\_10\_36\_16M.lsu) which resides in the directory where files were extracted during installation (the default is C:\Liteshow\_II) then select the “Open” button.



8. Select “Continue” to proceed with upgrade



*Note: Upgrade of the LiteShow II module takes several minutes to complete – take care to avoid interrupting the upgrade process.*

9. A message will be displayed once the firmware upgrade is complete. Clicking “OK” will allow the LiteShow II module to restart and you will be able to use your LiteShow II module with all of the benefits of version 2.10.

