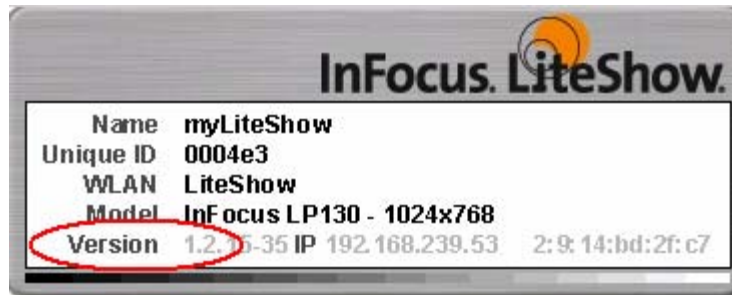
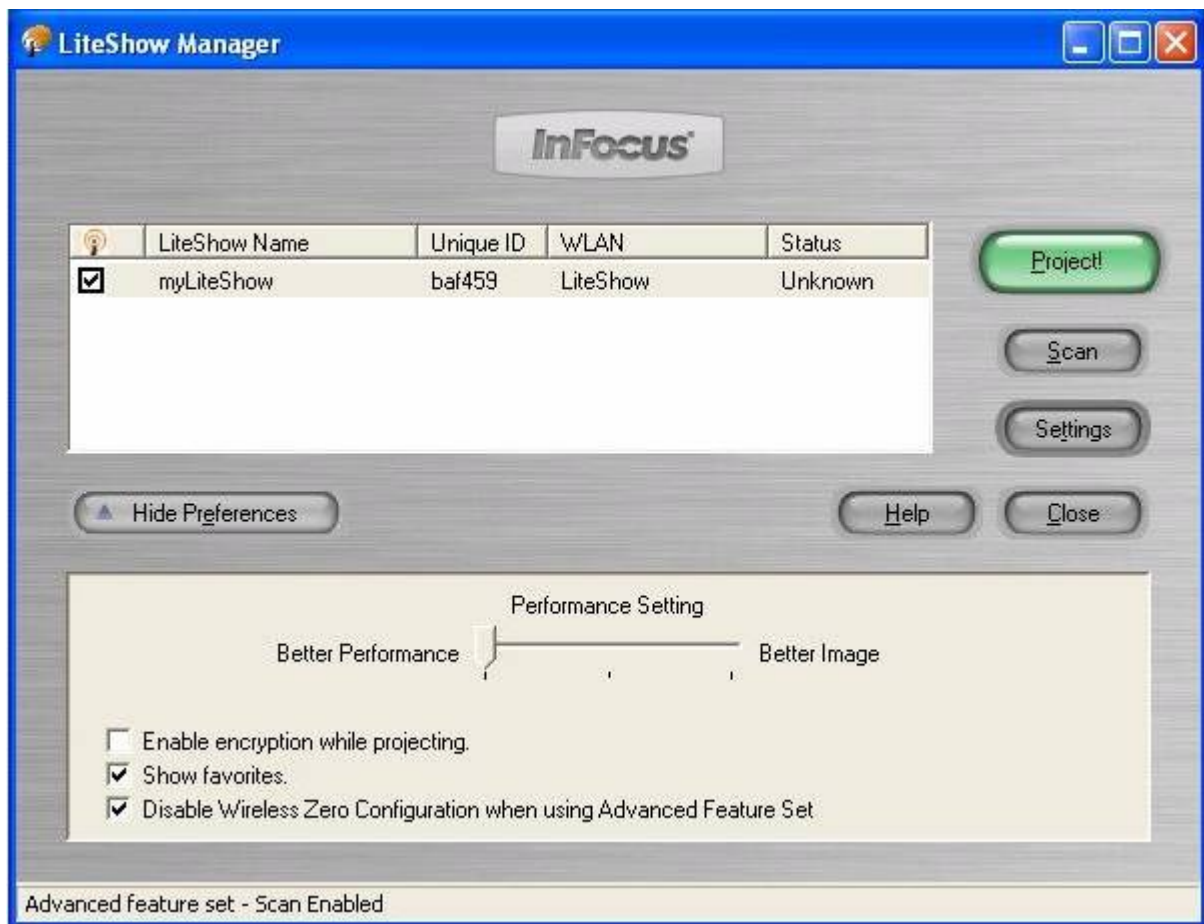


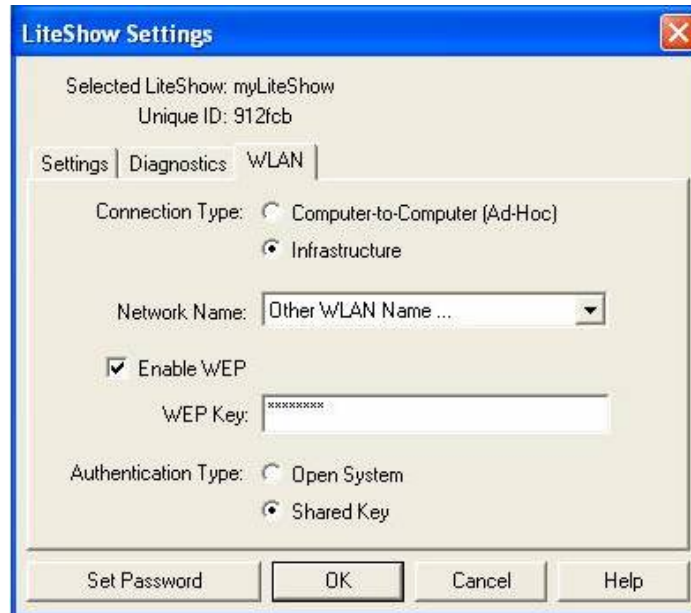
Version 1.2 of LiteShow has infrastructure support, meaning you can connect LiteShow to your organization's network via an Access Point, allowing you to access printers, network shares, or the Internet, all while wirelessly projecting.



- 1) Connect to the LiteShow device via the default LiteShow settings of Ad-hoc.



- 2) Highlight the LiteShow and click on the settings button



- 3) Go to the WLAN tab
- 4) Select the Infrastructure radio button.
- 5) Select your Network Name in the drop down box. **If not listed, it is recommended to turn SSID broadcasting on via your access point rather than typing the name in the other field.*
- 6) If your network is setup to use WEP security please enter your WEP key in HEX format.
- 7) Select Open System or Shared Key depending on your network setup
- 8) At this time select OK

Please note: if the WEP key was entered incorrectly you will need to do a factory reset on your LiteShow. The Factory reset procedure can be found in the Troubleshooting section of the Help File included with LiteShow Manager application.