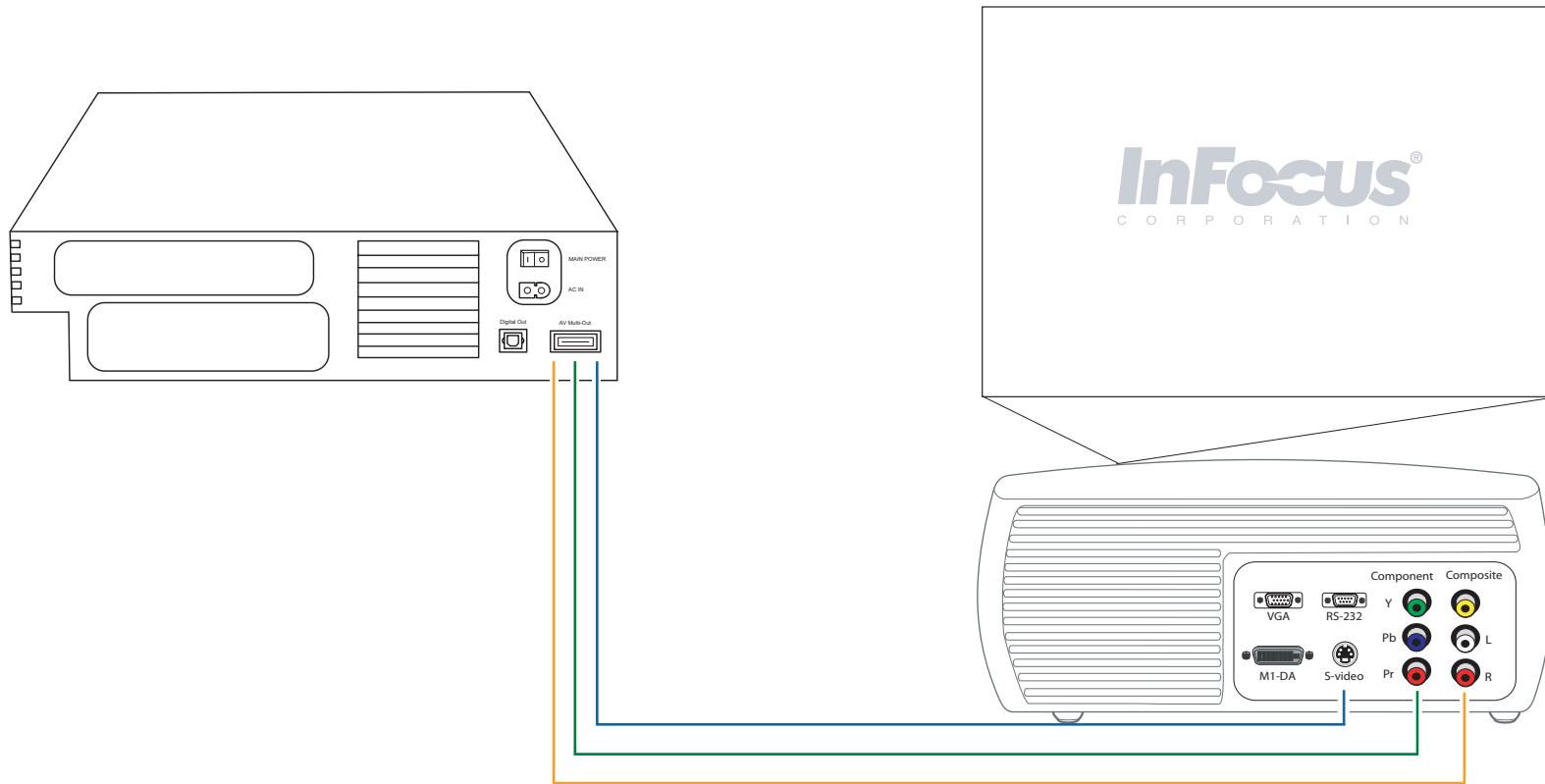


# InFocus Projector Setup Guide for a Sony PlayStation 2

*How to connect a Sony PlayStation 2 to an InFocus projector*



## Table of Contents

- Good** - For the quickest setup, see [page 2](#).
- Better** - If you have the PlayStation 2 S-video AV cable, see [page 3](#).
- Best** - If you have the PlayStation 2 component AV cable, see [pages 4-5](#).

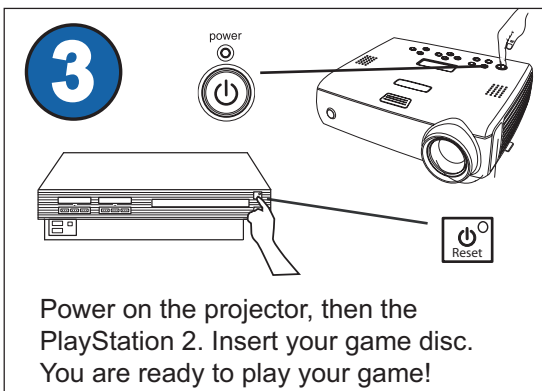
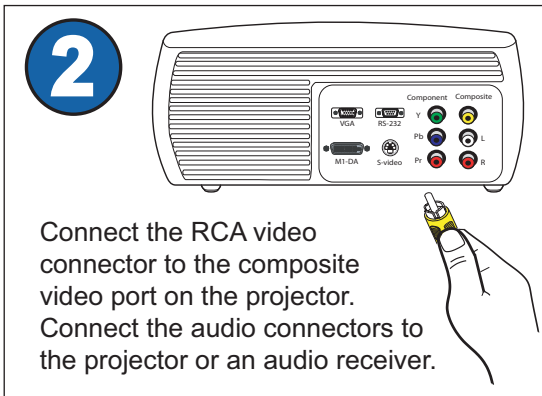
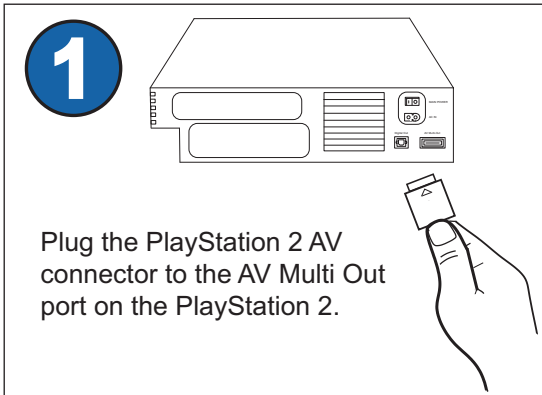
## For more information and troubleshooting...

Read the tips, common issues and frequently asked questions on [pages 6-8](#).

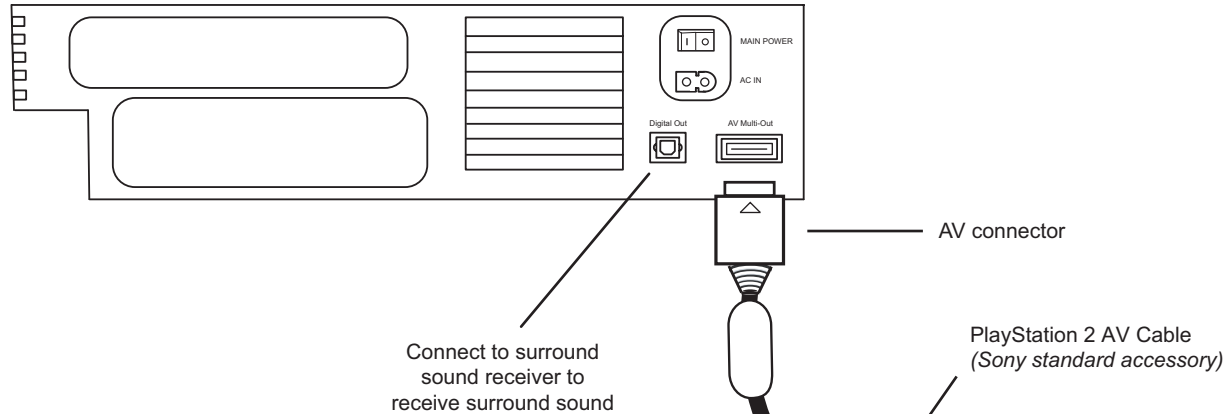
# Connect a Sony PlayStation 2 to a projector using RCA (composite) video cable

## Setup Requirements

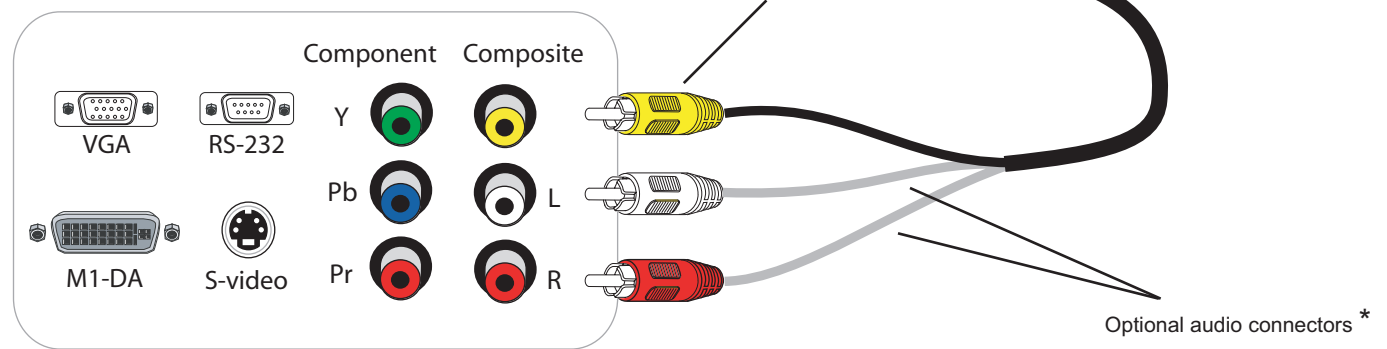
- Sony PlayStation 2 game console
- Projector with composite video-in port
- PlayStation 2 AV cable (PlayStation 2 AV Multi Out connector to male RCA (composite) AV connectors)



## PlayStation 2 Rear Connector Panel



## Projector Connector Panel



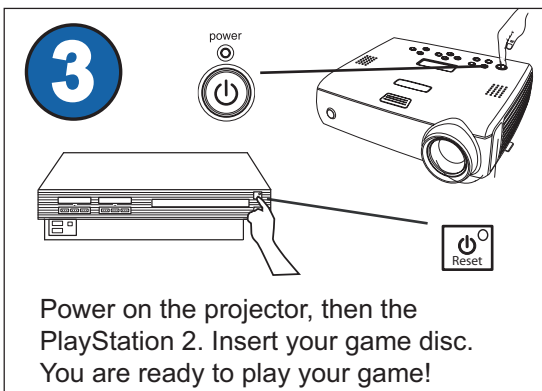
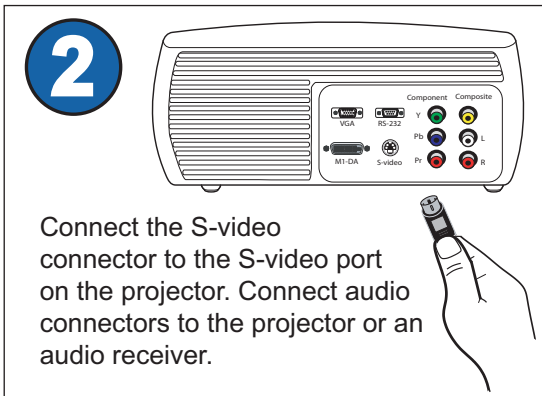
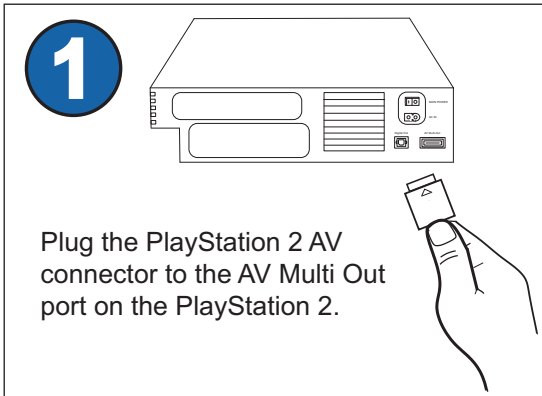
connector panel may vary from actual product

\* We recommend connecting the PlayStation 2 to an external sound system to provide the best audio experience.

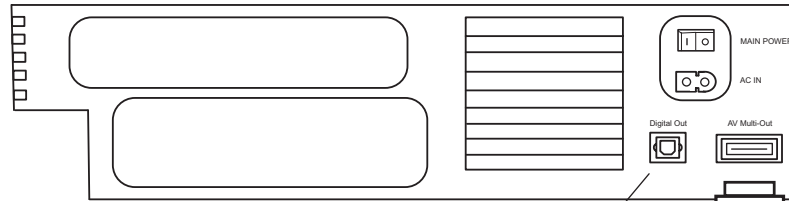
# Connect a Sony PlayStation 2 to a projector using an S-video cable

## Setup Requirements

- Sony PlayStation 2 game console
- Projector with an S-video port
- PlayStation 2 S-video cable (PlayStation 2 AV Multi Out connector to S-video and RCA audio connectors)



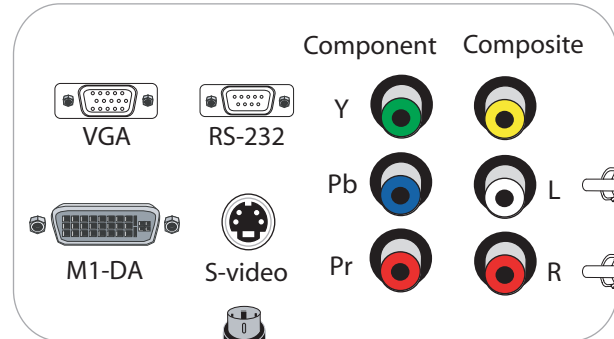
## PlayStation 2 Rear Connector Panel



Connect to surround sound receiver to receive surround sound

PlayStation 2 S-video cable (Sony optional accessory)

## Projector Connector Panel



connector panel may vary from actual product

Optional audio connectors \*

\* We recommend connecting the PlayStation 2 to an external sound system to provide the best audio experience.

## Setup Requirements

- Sony PlayStation 2 game console
- Projector with component video ports
- PlayStation 2 component AV cable (PlayStation 2 AV Multi Out connector to component AV connectors)



**1**

Plug the PlayStation 2 AV connector to the AV Multi Out port on the PlayStation 2.

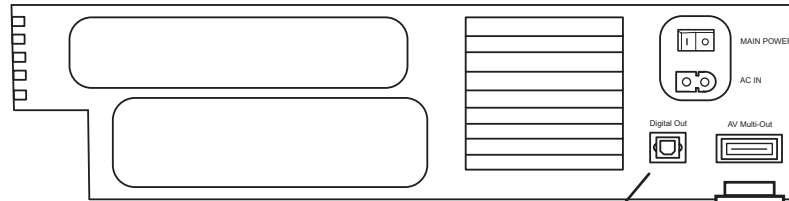
**2**

Connect the color-coded component connectors to the component ports on the projector. Connect the audio connectors to the projector or an audio receiver.

**3**

Power on the projector first, then the PlayStation 2. Insert your game disc. You are ready to play your game!

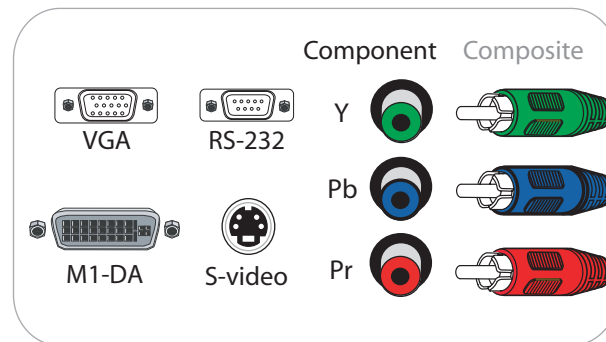
## PlayStation 2 Rear Connector Panel



Connect to surround sound receiver to receive surround sound

PlayStation 2 component cable (Sony optional accessory)

## Projector Connector Panel



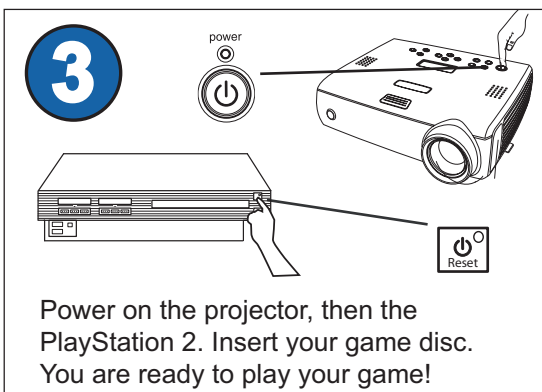
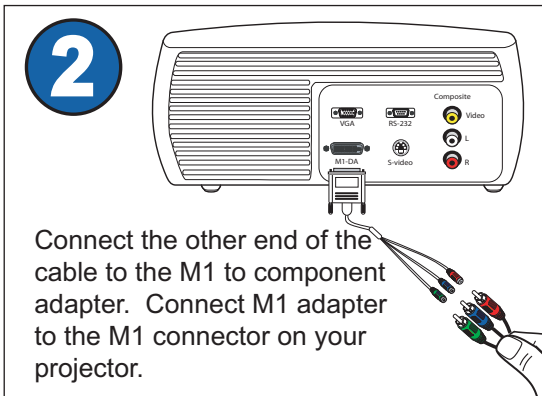
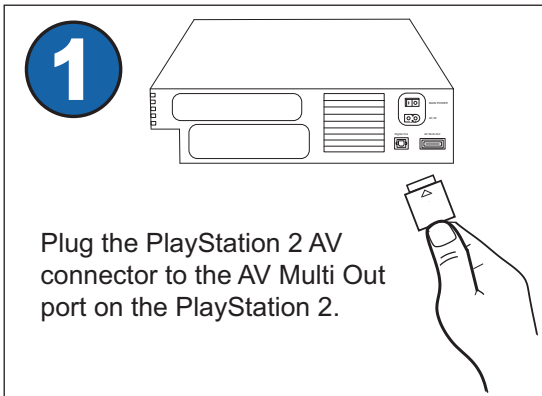
connector panel may vary from actual product

Optional audio connectors \*

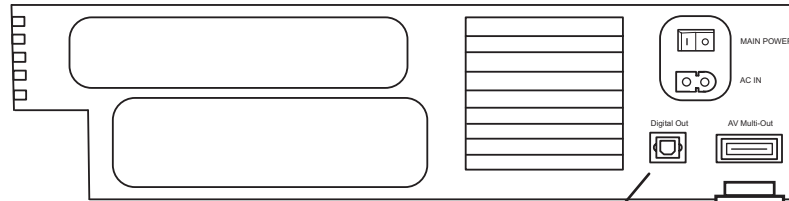
\* We recommend connecting your PlayStation 2 to an external sound system to provide the best audio experience.

## Setup Requirements

- Sony PlayStation 2 game console
- Projector without component video ports
- PlayStation 2 component AV cable (AV Multi Out connector to component AV connectors)
- M1 to component adapter (InFocus part #SP-M1-ADPT)
- Component video cable (red, green, blue male RCA)

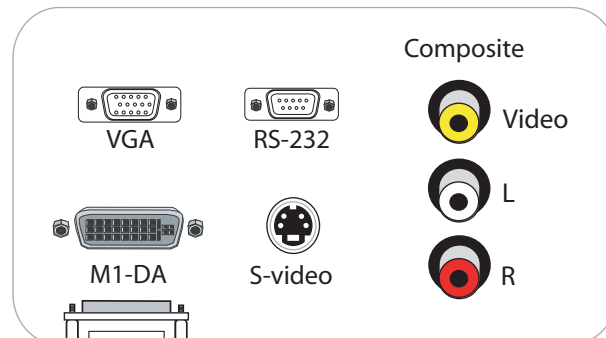


## PlayStation 2 Rear Connector Panel



Connect to surround sound receiver to receive surround sound

## Projector Connector Panel



connector panel may vary from actual product

M1 to Component adapter (InFocus optional accessory)



\* We recommend connecting your PlayStation 2 to an external sound system to provide the best audio experience.

## Tips

- For the best sound, we recommend connecting the Sony PlayStation 2 to an audio receiver or surround sound system. The PlayStation 2 has a built-in optical digital audio port, which supports 5.1 surround sound. With RCA red and white audio cables, you receive 2.1 stereo sound.
- If you are connecting your PlayStation 2 to the M1 port on the projector, you need a special adapter. Refer to the Service and Support web site or the InFocus user guide to reference the video connectivity charts.
- When you want display an PlayStation 2 game in 480p, always check to make sure that the game supports 480p. Some games support only 480i.
- PlayStation 2 does not support high definition and only supports up to 480p with most games.
- If you connect to a progressive-only input such as an M1 connector on the projector, make sure that Y Cb/Pb Cr/Pr is selected under Component Video Out in the PlayStation 2 System Configuration menu.
- When you connect an audio component with a built-in Dolby Digital decoder, set “Digital Out (Optical)” to “On” and then set “Dolby Digital” to “On” in the “Audio Setup” display in the PlayStation 2 menu.
- When you connect an audio component with a built-in DTS decoder, set “Digital Out (Optical)” to “On” and then set “DTS” to On” in the “Audio Setup” display in the PlayStation 2 menu.
- Remember that the PlayStation has two power switches; the main power and standby/reset buttons. The main power must be switched on, in order for the standby/reset button to turn the system on.
- Visit the Service and Support web site at <http://www.infocus.com/service> for further projector support, including FAQs, firmware, user guides and connectivity information.

## Common Issues

### **SYMPTOM: image is not perfectly rectangular (keystoning)**

**Solution:** When a projected image is wider at the top or the bottom (horizontal keystoning), or taller on the right or left side (vertical keystoning), the projector is not perpendicular to the screen, either in the vertical plane or the horizontal plane.

If the sides are angled, then you need to raise or lower the front of the projector. Also, most projectors have digital vertical keystone correction that you can access with the remote, keypad or menu. If the top and bottom of the image are angled, then you need to rotate the projector left or right until the image is rectangular. Most projectors do not have digital horizontal keystone correction.

### **SYMPTOM: image proportion is incorrect (people look too tall or too short)**

**Solution:** The aspect ratio is set incorrectly on the projector and/or PlayStation 2. Make sure the projector and PlayStation 2 aspect ratio are the same. In the projector menu, you can change the aspect ratio. In the PlayStation menu, you can change the aspect ratio.

### **SYMPTOM: sound is too soft from projector speakers**

**Solution:** We recommend connecting the audio to a home theater audio receiver or amplifier to receive a more robust and quality audio experience. The speakers on the projector are meant for very small spaces.

### **SYMPTOM: light bar rolling from bottom to top**

**Solution:** This is probably a ground loop issue. Ground loop effects are caused by a differential in your power between your source and projector. The solution is to ground your source and projector. Use a ground loop isolator and/or plug both the source and projector to the same power outlet.

A rolling bar can also be caused by poorly shielded cabling. Make sure you use quality cables

### **SYMPTOM: static, noise, or video artifacts in video image**

**Solution:** Usually you can eliminate a lot of video defects by using high quality cable in as short a length as possible. For the best results, we recommend using component cables with your projector. Composite and S-video cables do not transmit high definition video. Try to keep cable length to less than 10 feet. If your setup requires a longer cable, make sure to use the thicker, well-shielded cables.

### **SYMPTOMS: no video image from the projector**

#### **Solution:**

- Make sure the projector is searching the correct input (see the projector user's guide). If Auto Source is turned off, you need to manually change the source that the projector is searching. Press the Auto Source or Video button the projector keypad or remote.
- Try a different video cable. The cable may be defective.
- Some video ports do not accept progressive signals. Refer to connectivity chart on the Service and Support web site.

## Frequently Asked Questions

### How can I display high definition with my PlayStation 2?

The PlayStation 2 does not support high definition. It only supports up to 480p. Some games do not support 480p.

### What connection can I use to achieve the best video quality?

Connector Type	Quality	Signal Type
Composite	Good	Analog, standard definition
S-video	Better	Analog, standard definition
Component	Best	Analog, 480i, 480p

### At what cable length does the video quality start to suffer?

The answer depends on the quality of cabling you use. Some cables begin to lose noticeable quality beyond 10 feet. Higher quality cables can maintain a clean signal beyond 25 feet. To guarantee the best video quality, we recommend using heavy duty shielded cabling (for example Monster Cable or Belkin). Use as short a cable as your setup allows.

### Which one is better: 480i (480 lines interlaced) or 480p (480 lines progressive)?

Most people cannot tell the difference between 480i and 480p. It depends on whether the projector or the source has the better deinterlacer chip. When you send 480i to the projector, the projector's deinterlacer converts the signal to a progressive signal. When you send 480p, the video source's deinterlacer converts the signal. We recommend sending 480i to the projector.

### How do I enable 480p on my PlayStation 2?

1. Turn on the console without a game disc.
2. Under the Main Menu, select "System Configuration" and press X button.
3. Select "Component Video Out".
4. Choose "Y Cb/Pb Cr/Pr".
5. Depending on the game, it will default to 480i or 480p.

### Where is the luma detail, chroma detail, CCS and noise reduction settings in the advanced menu? My advanced menu is not matching what I see in the projector's user guide.

These range of advanced options varies, depending on which video source is active. The ones listed above are available only when composite, S-video or 480i component signals are projected. If you are sending a 480 progressive signal, these options are not available.

### My PlayStation 2 and projector have a LAN port. Can I connect the two devices with a network cable instead of using the PlayStation video cables?

No, LAN port on the PlayStation 2 and projector cannot be used for video and audio. The PlayStation 2 LAN port is for online gaming only.

## Frequently Asked Questions

### How can I display high definition with my PlayStation 2?

The PlayStation 2 does not support high definition. It only supports up to 480p. Some games do not support 480p.

### What connection can I use to achieve the best video quality?

Connector Type	Quality	Signal Type
Composite	Good	Analog, standard definition
S-video	Better	Analog, standard definition
Component	Best	Analog, 480i, 480p

### At what cable length does the video quality start to suffer?

The answer depends on the quality of cabling you use. Some cables begin to lose noticeable quality beyond 10 feet. Higher quality cables can maintain a clean signal beyond 25 feet. To guarantee the best video quality, we recommend using heavy duty shielded cabling (for example Monster Cable or Belkin). Use as short a cable as your setup allows.

### Which one is better: 480i (480 lines interlaced) or 480p (480 lines progressive)?

Most people cannot tell the difference between 480i and 480p. It depends on whether the projector or the source has the better deinterlacer chip. When you send 480i to the projector, the projector's deinterlacer converts the signal to a progressive signal. When you send 480p, the video source's deinterlacer converts the signal. We recommend sending 480i to the projector.

### How do I enable 480p on my PlayStation 2?

1. Turn on the console without a game disc.
2. Under the Main Menu, select "System Configuration" and press X button.
3. Select "Component Video Out".
4. Choose "Y Cb/Pb Cr/Pr".
5. Depending on the game, it will default to 480i or 480p.

### Where is the luma detail, chroma detail, CCS and noise reduction settings in the advanced menu? My advanced menu is not matching what I see in the projector's user guide.

These range of advanced options varies, depending on which video source is active. The ones listed above are available only when composite, S-video or 480i component signals are projected. If you are sending a 480 progressive signal, these options are not available.

### My PlayStation 2 and projector have a LAN port. Can I connect the two devices with a network cable instead of using the PlayStation video cables?

No, LAN port on the PlayStation 2 and projector cannot be used for video and audio. The PlayStation 2 LAN port is for online gaming only.