

BigTouch

The giant all-in-one touch PC that demands an audience.



BigTouch

BigTouch combines the fun of a tablet with the productivity of a PC in a giant, fast, and fluid touch experience for your classroom or other shared work space.



INF5512AG

55"
Full HD (1080p)
Windows 10 Pro

INF6512AG

65"
Full HD (1080p)
Windows 10 Pro

INF7012

70"
UHD 4K
Windows 10 Pro

INF8511

85"
UHD 4K
Windows 10 Pro

Key Features

- Incredibly sharp 4K or 1080p resolution
- Powered by Windows 10 Pro
- Ultra-responsive capacitive touch available on the 65" and 70" model
- Run all your Windows apps, even the older ones, in touch mode
- Highly customizable for your needs and your PC applications
- Intel Core i7 processor and fast solid state hard drive
- Wireless mouse and keyboard included

Introducing the INF5512AG

The 55-inch INF5512AG incorporates all the performance and flexibility of BigTouch, plus great expanded features:

- Total Touch Control™ to change source and setting on screen
- Built-in Annotation Tool for all video sources
- Built-in Screen Capture for all video sources
- Built-in Wireless Casting to view your devices
- Anti-glare display comes standard

The Power of a PC at Your Fingertips

Maximize the touch experience on a large scale by adding the power of a PC with the InFocus BigTouch.

- Multi-touch touch display with intuitive Windows gestures to interact with your content
- Personalize the Start screen with tiles that connect to a person, app, website, folder or whatever else is important to you
- Familiar Windows desktop that you've used before
- Use your apps, get more apps in the Windows Store, and arrange them all the way you want
- Multi-task by snapping two apps side-by-side
- Enhanced features to easily connect to your networks, access files in the cloud, encrypt data, and more

The Tablet Experience... Magnified

Tablets are fun. Touch is intuitive. The InFocus BigTouch employs a beautiful display that allows that enjoyable experience, and your content, to be seen and shared.

- Brilliant 4K or 1080p HD displays show off your content with incredible brightness, color and clarity
- Multi-touch screen delivers exceptionally accurate touches, swipes and gestures
- Windows gestures such as tap, slide, swipe, pinch, and rotate can be used to get a global view of everything on the screen and slide back and forth to find what you're looking for
- Wireless keyboard and mouse also included to easily control the display from your seat



Bring Your Display to Life with 4K

The 70" and 85" BigTouch models now feature 4K resolution for an incredibly sharp, vivid picture. Boost the impact of your content and make every meeting or presentation more engaging, informative, and memorable with 4K.

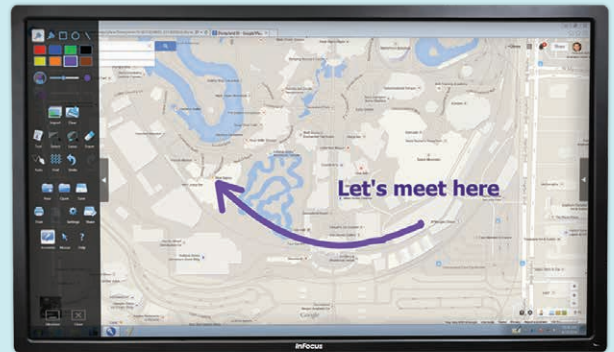
- More pixels mean more detail and depth for amazingly life-like images
- Enhanced color rendering
- Presenters benefit from crisp, clear images up close
- Audiences enjoy vibrant, detailed images, even from the back of a conference room

Whiteboard Like a Pro

Add our optional BigNote whiteboarding app to turn your BigTouch into the best digital whiteboard available.

- Wide assortment of pens, colors and shapes
- Expand to a large 10x10 virtual whiteboard canvas
- Annotate on screen and save the changes
- BigNote files are cross-compatible with Mondopad's whiteboard app

[BigNote software \(INS-BNOTE1\) pictured here.](#)



How Would You Use Your BigTouch?

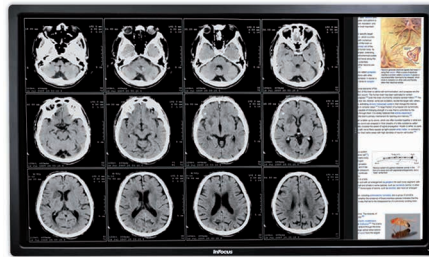
The form factor of BigTouch combined with the user experience and flexibility of a Windows PC means its use is only limited by your imagination.



Education

Higher education and primary and secondary schools can benefit from BigTouch in administrative offices or in the classroom. Its bright, engaging display keeps students' attention and Windows 10 is intuitive and familiar for students, staff and IT.

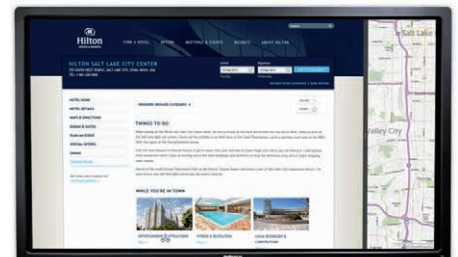
- In classrooms for giving and preparing lessons
- Access and display content from the web and the cloud
- In administrative offices as a shared PC
- Flexible and secure for IT to manage



Medical

The high definition display and ease of use of BigTouch make it a great fit for hospitals, clinics, labs, and administrative offices.

- In waiting rooms for education and/or self service
- For accessing and analyzing information, such as imaging
- For patient education, such as explaining imaging, video, and other patient care info
- At nursing stations as a shared PC



Hospitality

Hotel lobbies can greatly benefit from BigTouch to help their guests help themselves.

- Learn about the hotel's amenities
- Browse maps of the hotel and of the surrounding area
- View hotel restaurant menus and make reservations
- Find fun things to do at the hotel and in the area

Specifications*

PC	INF5512AG	INF6512AG	INF7012	INF8511
Processor	Intel® Core i7-6500U, Q170 chipset		Intel® Core i7-6700T, Q170 chipset	
Memory	8 GB of RAM			
Hard Drive	SSD 256GB			
LAN	802.3 10/100/1000 Base-T with Wake on LAN			
Wi-Fi	By USB adapter supporting 802.11 b/g/n, 2.4 GHz	Dual band 802.11 a/b/g/n MIMO PCIe half mini card, 2.4 GHz with Intel, AMT support		
Input Connections	USB 3.0 x3, USB 2.0, RJ45 Ethernet, 3.5mm Stereo Audio, RS-232		USB 3.0 Type-A x2 (on PC), Ethernet (RJ45 x2), 3.5mm audio input (stereo)	
Output Connections	HDMI out		DisplayPort 1.2 out	
Bluetooth	N/A		4.0	
Operating System	Windows 10 Pro			
DISPLAY	INF5512AG	INF6512AG	INF7012	INF8511
Size	55" diagonal	65" diagonal	70" diagonal	85" diagonal
Anti-Glare	Yes	Yes	No	Yes
Resolution	Full HD (1920 x 1080)		4K (3840 x 2160)	
Refresh Rate	60 Hz		120 Hz	
Brightness	350 cd/m2	350 cd/m2	350 cd/m2	500 cd/m2
Contrast	1200:1	5000:1	4000:1	3000:1
Viewing Angle	178°	178°	176°	
Technology	LED Backlight		LED edge-lit LCD	
Video Input Compatibility	Full NTSC, 480i, 480p, 720p, 1080i, 1080p		Full NTSC, 480i, 480p, 720p, 1080i, 1080p, 4K	
Data Input Compatibility	VGA (640×480), SVGA (800×600), XGA (1024×768), SXGA (1280×1024), SXGA+ (1400×1050), UXGA (1600×1200), WXGA+ (1440×900), WSXGA+ (1680×1050), WUXGA (1280×800), WUXGA (1920×1200)			
Input Connections	HDMI x5, VGA, PC Audio In (stereo, VGA Audio source), Component video, Composite video, 3.5mm Microphone (Mono linked to OPS), RS232, USB 2.0 x2, USB 3.0 x2, OPS PC USB x2, RCA Audio (L/R, link to Component and Composite Video), Media USB (Android), USB 2.0 Type-A x2 (for touch control)	HDMI x4, VGA (HD15 VESA), component, RS232, 3.5mm line-in audio (mono), RCA stereo audio in, 3.5mm microphone in, USB Type-A x5 (4 on front, 1 on top) USB Type-B (for touch control)	DisplayPort 1.2, HDMI 2.0 x2 (rear), HDMI 1.4 x2 (rear and front), VGA, component, 3.5mm line-in audio (mono), RCA stereo audio in, RS232 serial, USB Type-A x5 (4 on front, 1 on top), USB Type-B (for touch control)	Rear: DisplayPort 1.2, HDMI 2.0 x2, HDMI 1.4, VGA, Component, 3.5mm line-in audio (mono), RCA stereo in, RS232 serial, USB 2.0 Type-B (for touch control) Front: USB 3.0 Type-B (for touch control), USB 3.0 Type-A x4, HDMI 1.4 Top: USB 3.0 Type-A (used by camera)
Output Connections	HDMI Out, 3.5mm PC Audio, 3.5mm Headphone, SPDIF, RCA Audio (L/R), RS-232	RCA audio stereo (L/R) out		
Touch Screen	Edge-to-edge multi-touch system (IR) with support for 10 point gestures	Edge-to-edge 10-point projected capacitive touch		Edge-to-edge quad camera multi-touch system with support for 10 point Windows gestures
Speakers (Integrated)	Stereo 10W x2	Stereo 10W x2		Stereo 7W x2
Power	AC 100 to 240V, 50/60Hz			
Operating System	Android 5.0	N/A		
SYSTEM	INF5512AG	INF6512AG	INF7012	INF8511
Accessories Included	Wireless keyboard and mouse (where allowed), HDMI cable, USB cable, power cord, remote control (no batteries), WiFi-USB dongle, quick setup guide	Wireless keyboard and mouse (where allowed), VGA or HDMI cable, USB cable, power cord, remote control, quick setup guide		
Warranty (Europe - EU)	2 years limited, extended warranties available			
Mount	Vesa 300 x 300mm M8 screws	Vesa 400 x 400mm M8 screws		Vesa 400 x 600mm M8 screws
Product Weight	84 lbs / 38 kg	123.5 lbs / 56 kg	108 lbs / 49 kg	232.6 lbs / 101.5 kg
Product Dimensions	50.8 x 30.8 x 4.2 in / 1290 x 782.6 x 105.7 mm	59.8 x 3.2 x 35.3 in / 1520 x 896 x 81 mm	64.2 x 4.2 x 37.9 in / 1629.8 x 106.6 x 963.3 mm	78.3 x 4.4 x 46.7 in / 1988 x 112.1 x 1186 mm
Shipping Weight	104 lbs / 47 kg	154.5 lbs / 70.1 kg	147.7 lbs / 67 kg	264.6 lbs / 120 kg
Shipping Dimensions	59.8 x 38 x 9.6 in / 1520 x 965 x 245 mm	69 x 10.6 x 44.4 in / 1752 x 270 x 1128 mm	73.2 x 46.5 x 10.2 in / 1860 x 1180 x 260 mm	88.1 x 12.2 x 56.2 in / 2239 x 311 x 1427 mm
Operating Conditions	41 to 95°F at 0 to 10K ft / 5 to 35°C at 0 to 3,048 m			
Noise	<40dBA @ 77°F / 25°C			
Energy Star	5.1 for display and PC			

* Product specifications, terms, and offerings are subject to change at any time without notice.

Accessories

BigNote Whiteboard Software (INS-BNOTE1)
 RealCam Pan/Tilt/Zoom Camera (INA-PTZ-4)
 Camera with Microphone Array (HW-CAMERA-2)
 Soundbars (HW-SOUNDBAR-4)
 Wall Mount (INF-WALLMNT2, INF-WALLMNT3)
 Mobile Carts (INF-MOBCART, INF-MOBCARTPRO-B, INF-MOBCARTPRO-S, INF-MCART-PL)

Deluxe Mobile Cart with PTX Mount and Accessory Shelf (INA-MCARTDX)
 Lift Assist Mounts (INA-MNTBB70, INA-MNTBB95)
 Floor Support for Lift Assist Wall Mount (INA-SUPPORTBB)
 Mobile Cart for Lift Assist Mount (INA-CARTBB)
 VESA Interface Bracket (INA-VESABB)

Extended warranties
 55-inch (EPW-55BT1, EPW-55BT2)
 65-inch (EPW-65BT1, EPW-65BT2)
 70-inch (EPW-70BT1, EPW-70BT2)
 85-inch (EPW-85BT1, EPW-85BT2)

InFocus

InFocus Corp HQ,
USA
13190 SW 68th Parkway, #200
Portland, OR 97223-8368
+1 503.207.4700
+1 877.388.8385
www.infocus.com
© 2017 InFocus Corporation

InFocus
Germany, Austria, Switzerland
Philipp-Reis-Straße 14
63303 Dreieich
Germany
ebcgermany@infocus.com
+49 (0)89 416 156 250
www.infocus.de

InFocus
France
10, avenue de la créativité
59650 Villeneuve d'Ascq
France
+33 (0) 9 72 45 46 85
[SIP: 8420@infocus.net](mailto:SIP:8420@infocus.net)
france@infocus.info

InFocus
Executive Briefing Centre
(Europe)
Philipp-Reis-Straße 14
63303 Dreieich
Germany
+49 (0)89 416 156 252
ebcgermany@infocus.com