

# InFocus

## Technical Documentation

### Applies to INF6502, INF6511, INF6512, INF6522, INF6521 Models

#### Introduction:

RS-232 is a communication protocol that can be used to send commands to and retrieve status information from the MondoPad and other RS-232 enabled devices. This is often used in conjunction with a control system capable of managing several other systems such as audio, lighting, and video switching systems. Simpler RS-232 implementations require nothing more than a personal computer, null modem serial cable, hex capable communication software and the MondoPad.

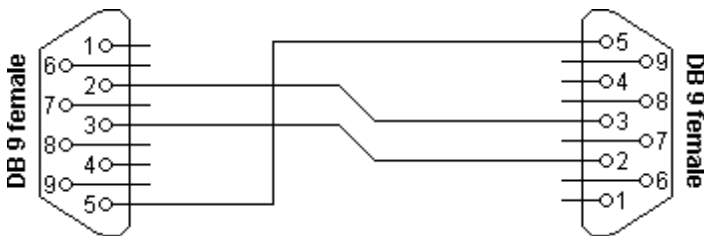
#### Configuration:

Setting	Value
Bits per second	9600 baud rate
Data Bits	8
Parity	None
Stop bits	1
Flow Control	None

#### Required Cable:

Null modem cable – female to female DB9 connector (9-pin serial)

#### Connector Pin-out:



Connector 1	Connector 2	Function
2	3	Transmit/Receive Data
3	2	Receive/Transmit Data
5	5	Ground

#### Minimum timing requirements:

- 300ms between commands
- 10ms character delay
- 20 second delay after a Power Off is initiated
- 1 second delay after a source change is initiated

**Get structure and commands:**

The commands and structure below are used to Read or “Get” data from a MondoPad over RS232.

**Send Command Structure**

Name	Header	Length	ID 1	ID 2	Command Type	Command 1	Command 2	CR
Byte order	1	2	3	4	5	6	7	8

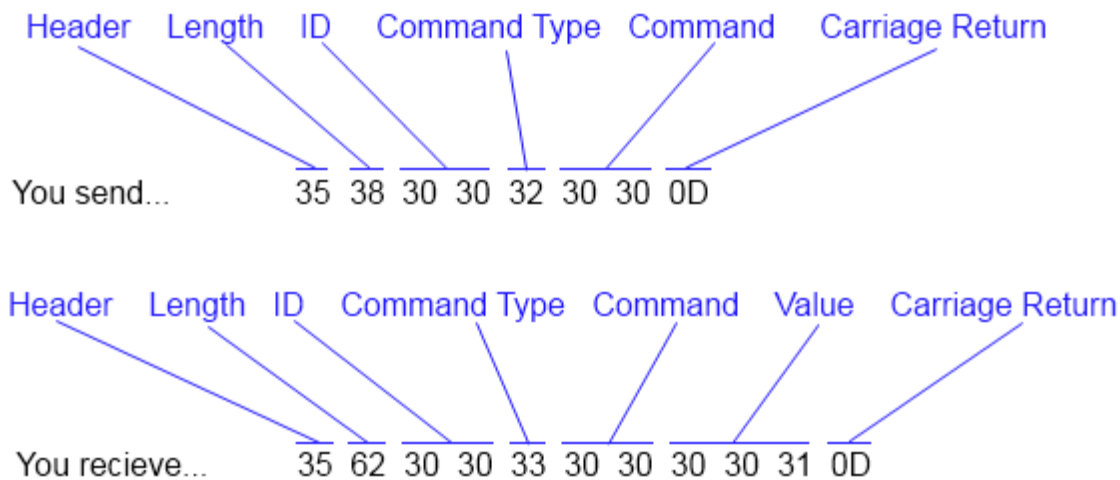
**Valid Reply Structure**

Name	Header	Length	ID 1	ID 2	Command Type	Command 1	Command 2	Value1	Value2	Value3	CR
Byte order	1	2	3	4	5	6	7	8	9	10	11

**Not Valid Reply Structure**

Name	Header	Length	ID 1	ID 2	Command Type	CR
Byte order	1	2	3	4	5	6

For example, say a MondoPad is powered on and you send the Get Power status command:



Since the Value is 001, this indicates the MondoPad is On. If the response value was 000, the MondoPad would be Off. If you use an invalid command for the 6<sup>th</sup> and 7<sup>th</sup> octets, you would get 35 36 30 30 33 36 0D

In the command table below, the actual Get command has a gray background and the possible valid responses have a white background. All the commands are listed in ASCII.

Responses with a value of “XXX” have a range of possibilities which are listed in the Valid Responses Column (example, Get Brightness has possible values of 000 – 100 (30 30 30 – 31 30 30))

***\*Some commands will only work on specific models***

Get Command	ASCII Character											HEX											
	Header	Length	ID1	ID2	Command Type	Command 1	Command2	Value1	Value2	Value3	CR	Header	Length	ID1	ID2	Command Type	Command 1	Command 2	Value1	Value2	Value3	CR	
-----																							
<b>Valid Responses</b>																							
Get Power status	5	8	0	0	2	0	0				CR	35	38	30	30	32	30	30					0D
000 : STBY	5	b	0	0	3	0	0	0	0	0	CR	35	62	30	30	33	30	30	30	30	30	30	0D
001 : ON	5	b	0	0	3	0	0	0	0	1	CR	35	62	30	30	33	30	30	30	30	30	31	0D
Get Input select	5	8	0	0	2	0	1				CR	35	38	30	30	32	30	31					0D
000 : HDMI1	5	b	0	0	3	0	1	0	0	0	CR	35	62	30	30	33	30	31	30	30	30	30	0D
001 : HDMI2	5	b	0	0	3	0	1	0	0	1	CR	35	62	30	30	33	30	31	30	30	30	31	0D
002 : HDMI3	5	b	0	0	3	0	1	0	0	2	CR	35	62	30	30	33	30	31	30	30	30	32	0D
004 : HDMI4	5	b	0	0	3	0	1	0	0	4	CR	35	62	30	30	33	30	31	30	30	30	34	0D
005: Lightcast	5	b	0	0	3	0	1	0	0	5	CR	35	62	30	30	33	30	31	30	30	30	35	0D
009: Mondopad	5	b	0	0	3	0	1	0	0	9	CR	35	62	30	30	33	30	31	30	30	30	39	0D
003 : VGA	5	b	0	0	3	0	1	0	0	3	CR	35	62	30	30	33	30	31	30	30	30	33	0D
006 : YPbPr	5	b	0	0	3	0	1	0	0	6	CR	35	62	30	30	33	30	31	30	30	30	36	0D
008 : AV	5	b	0	0	3	0	1	0	0	8	CR	35	62	30	30	33	30	31	30	30	30	38	0D
Get Audio Input Select	5	8	0	0	2	0	2				CR	35	38	30	30	32	30	32					0D
000 : Audio 1	5	b	0	0	3	0	2	0	0	0	CR	35	62	30	30	33	30	32	30	30	30	30	0D
001 : Audio 2	5	b	0	0	3	0	2	0	0	1	CR	35	62	30	30	33	30	32	30	30	30	31	0D
003 : HDMI 1	5	b	0	0	3	0	2	0	0	3	CR	35	62	30	30	33	30	32	30	30	30	33	0D
004: HDMI 2	5	b	0	0	3	0	2	0	0	4	CR	35	62	30	30	33	30	32	30	30	30	34	0D
005: HDMI 3	5	b	0	0	3	0	2	0	0	5	CR	35	62	30	30	33	30	32	30	30	30	35	0D
007: HDMI 4	5	b	0	0	3	0	2	0	0	7	CR	35	62	30	30	33	30	32	30	30	30	37	0D
006: Mondopad	5	b	0	0	3	0	2	0	0	6	CR	35	62	30	30	33	30	32	30	30	30	36	0D
009: Lightcast	5	b	0	0	3	0	2	0	0	9	CR	35	62	30	30	33	30	32	30	30	30	39	0D
Get Keyboard Control	5	8	0	0	2	0	3				CR	35	38	30	30	32	30	33					0D
000 : Disable	5	b	0	0	3	0	3	0	0	0	CR	35	62	30	30	33	30	33	30	30	30	30	0D
001 : Enable	5	b	0	0	3	0	3	0	0	1	CR	35	62	30	30	33	30	33	30	30	30	31	0D
Get Brightness	5	8	0	0	2	1	0				CR	35	38	30	30	32	31	30					0D
000 ~ 100	5	b	0	0	3	1	0	X	X	X	CR	35	62	30	30	33	31	30	X	X	X	0D	
Get Contrast	5	8	0	0	2	1	1				CR	35	38	30	30	32	31	31					0D
000 ~ 100	5	b	0	0	3	1	1	X	X	X	CR	35	62	30	30	33	31	31	X	X	X	0D	
Get Sharpness	5	8	0	0	2	1	2				CR	35	38	30	30	32	31	32					0D
000 ~ 100	5	b	0	0	3	1	2	X	X	X	CR	35	62	30	30	33	31	32	X	X	X	0D	
Get Color Temperature	5	8	0	0	4	0	0				CR	35	38	30	30	34	30	30					0D
000: Native	5	b	0	0	5	0	0	0	0	0	CR	35	62	30	30	35	30	30	30	30	30	30	0D
001: 6500K	5	b	0	0	5	0	0	0	0	1	CR	35	62	30	30	35	30	30	30	30	30	31	0D
002: 9300K	5	b	0	0	5	0	0	0	0	2	CR	35	62	30	30	35	30	30	30	30	30	32	0D
003: User	5	b	0	0	5	0	0	0	0	3	CR	35	62	30	30	35	30	30	30	30	30	33	0D
Get Color Control Red	5	8	0	0	4	0	1				CR	35	38	30	30	34	30	31					0D
000 ~ 100	5	b	0	0	5	0	1	X	X	X	CR	35	62	30	30	35	30	31	X	X	X	0D	
Get Color Control Green	5	8	0	0	4	0	2				CR	35	38	30	30	34	30	32					0D
000 ~ 100	5	b	0	0	5	0	2	X	X	X	CR	35	62	30	30	35	30	32	X	X	X	0D	
Get Color Control Blue	5	8	0	0	4	0	3				CR	35	38	30	30	34	30	33					0D

000 ~ 100	5	b	0	0	5	0	3	X	X	X	CR	35	62	30	30	35	30	33	X	X	X	0D
Get Picture Mode	5	8	0	0	4	0	4				CR	35	38	30	30	34	30	34				0D
000: Standard	5	b	0	0	5	0	4	0	0	0	CR	35	62	30	30	35	30	34	30	30	30	0D
001: Highbright	5	b	0	0	5	0	4	0	0	1	CR	35	62	30	30	35	30	34	30	30	31	0D
002: Soft	5	b	0	0	5	0	4	0	0	2	CR	35	62	30	30	35	30	34	30	30	32	0D
Get Aspect Ratio	5	8	0	0	4	0	5				CR	35	38	30	30	34	30	35				0D
000: Wide	5	b	0	0	5	0	5	0	0	0	CR	35	62	30	30	35	30	35	30	30	30	0D
001: 4:3	5	b	0	0	5	0	5	0	0	1	CR	35	62	30	30	35	30	35	30	30	31	0D
Get Hposition	5	8	0	0	4	0	6				CR	35	38	30	30	34	30	36				0D
000 ~ 100	5	b	0	0	5	0	6	X	X	X	CR	35	62	30	30	35	30	36	X	X	X	0D
Get Vposition	5	8	0	0	4	0	7				CR	35	38	30	30	34	30	37				0D
000 ~ 100	5	b	0	0	5	0	7	X	X	X	CR	35	62	30	30	35	30	37	X	X	X	0D
Get Clock	5	8	0	0	4	0	8				CR	35	38	30	30	34	30	38				0D
000 ~ 100	5	b	0	0	5	0	8	X	X	X	CR	35	62	30	30	35	30	38	X	X	X	0D
Get Clock Phase	5	8	0	0	4	0	9				CR	35	38	30	30	34	30	39				0D
000 ~ 100	5	b	0	0	5	0	9	X	X	X	CR	35	62	30	30	35	30	39	X	X	X	0D
Get Gamma Selection	5	8	0	0	2	1	c				CR	35	38	30	30	32	31	43				0D
000 : NATIVE	5	b	0	0	3	1	c	0	0	0	CR	35	62	30	30	33	31	43	30	30	30	0D
001 : 2.2	5	b	0	0	3	1	c	0	0	1	CR	35	62	30	30	33	31	43	30	30	31	0D
002 : 2.4	5	b	0	0	3	1	c	0	0	2	CR	35	62	30	30	33	31	43	30	30	32	0D
Get Volume	5	8	0	0	2	5	0				CR	35	38	30	30	32	35	30				0D
000 ~ 100	5	b	0	0	3	5	0	X	X	X	CR	35	62	30	30	33	35	30	X	X	X	0D
Get Speaker	5	8	0	0	2	5	4				CR	35	38	30	30	32	35	34				0D
000 : External	5	b	0	0	3	5	4	0	0	0	CR	35	62	30	30	33	35	34	30	30	30	0D
001 : Internal	5	b	0	0	3	5	4	0	0	1	CR	35	62	30	30	33	35	34	30	30	31	0D
Get Mute	5	8	0	0	2	5	5				CR	35	38	30	30	32	35	35				0D
000: OFF	5	b	0	0	3	5	5	0	0	0	CR	35	62	30	30	33	35	35	30	30	30	0D
001: ON (mute)	5	b	0	0	3	5	5	0	0	1	CR	35	62	30	30	33	35	35	30	30	31	0D
Get Language	5	8	0	0	4	1	0				CR	35	38	30	30	34	31	30				0D
000: English	5	b	0	0	5	1	0	0	0	0	CR	35	62	30	30	35	31	30	30	30	30	0D
001: Chinese	5	b	0	0	5	1	0	0	0	1	CR	35	62	30	30	35	31	30	30	30	31	0D
Get OSD turn off	5	8	0	0	4	1	1				CR	35	38	30	30	34	31	31				0D
000 ~ 120	5	b	0	0	5	1	1	X	X	X	CR	35	62	30	30	35	31	31	X	X	X	0D
Get OSD H-Position	5	8	0	0	4	1	2				CR	35	38	30	30	34	31	32				0D
000 ~ 100	5	b	0	0	5	1	2	X	X	X	CR	35	62	30	30	35	31	32	X	X	X	0D
Get OSD V-Position	5	8	0	0	4	1	3				CR	35	38	30	30	34	31	33				0D
000 ~ 100	5	b	0	0	5	1	3	X	X	X	CR	35	62	30	30	35	31	33	X	X	X	0D
Get Overscan	5	8	0	0	4	1	4				CR	35	38	30	30	34	31	34				0D
000: Off	5	b	0	0	5	1	4	0	0	0	CR	35	62	30	30	35	31	34	30	30	30	0D
001: On	5	b	0	0	5	1	4	0	0	1	CR	35	62	30	30	35	31	34	30	30	31	0D
Get DDC/CI	5	8	0	0	4	1	5				CR	35	38	30	30	34	31	35				0D
000: Off	5	b	0	0	5	1	5	0	0	0	CR	35	62	30	30	35	31	35	30	30	30	0D
001: On	5	b	0	0	5	1	5	0	0	1	CR	35	62	30	30	35	31	35	30	30	31	0D
Get AutoSource	5	8	0	0	4	1	6				CR	35	38	30	30	34	31	36				0D
000: OFF	5	b	0	0	5	1	6	0	0	0	CR	35	62	30	30	35	31	36	30	30	30	0D
001: On	5	b	0	0	5	1	6	0	0	1	CR	35	62	30	30	35	31	36	30	30	31	0D
GetUSBHub	5	b	0	0	4	1	8				CR	35	38	30	30	34	31	38				0D
000: GetUSBHub-Auto	5	b	0	0	5	1	8	0	0	0	CR	35	62	30	30	35	31	38	30	30	30	0D

001: GetUSBHub-Lightcast	5	b	0	0	5	1	8	0	0	1	CR	35	62	30	30	35	31	38	30	30	31	0D
002: GetUSBHub-External	5	b	0	0	5	1	8	0	0	2	CR	35	62	30	30	35	31	38	30	30	32	0D
Get Screen Freeze	5	8	0	0	4	1	9				CR	35	38	30	30	34	31	39				0D
001: ON	5	b	0	0	5	1	9	0	0	1	CR	35	62	30	30	35	31	39	30	30	31	0D
000: OFF	5	b	0	0	5	1	9	0	0	0	CR	35	62	30	30	35	31	39	30	30	30	0D
Get Blank	5	8	0	0	5	0	0				CR	35	38	30	30	35	30	30				0D
001: ON	5	b	0	0	5	0	0	0	0	1	CR	35	62	30	30	35	30	30	30	30	31	0D
000: OFF	5	b	0	0	5	0	0	0	0	0	CR	35	62	30	30	35	30	30	30	30	30	0D
Get Dimming	5	8	0	0	5	0	1				CR	35	38	30	30	35	30	31				0D
000: Dimming 10%	5	b	0	0	5	0	1	0	1	0	CR	35	62	30	30	35	30	31	30	31	30	0D
001: Dimming 30%	5	b	0	0	5	0	1	0	3	0	CR	35	62	30	30	35	30	31	30	33	30	0D
002: Dimming 70%	5	b	0	0	5	0	1	0	7	0	CR	35	62	30	30	35	30	31	30	37	30	0D
003: Dimming 100%	5	b	0	0	5	0	1	1	0	0	CR	35	62	30	30	35	30	31	31	30	30	0D

## Set structure and commands:

The command structure below is used to set a data value or activate a function on a MondoPad over RS232

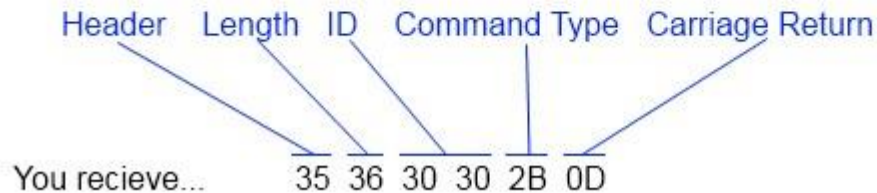
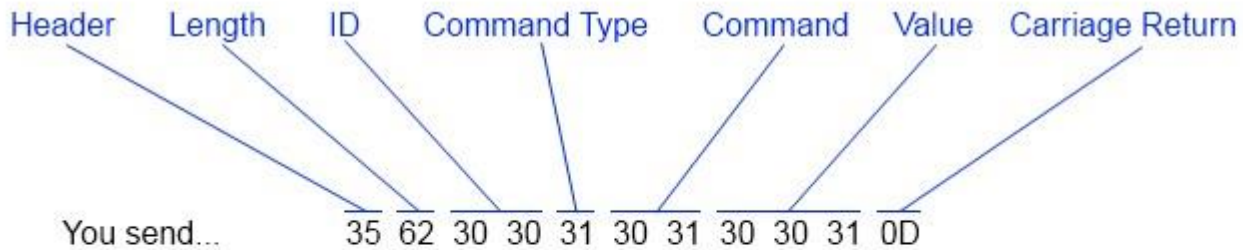
### Set Command Structure

Name	Header	Length	ID 1	ID 2	Command Type	Command 1	Command 2	Value1	Value2	Value3	CR
Bytes order	1	2	3	4	5	6	7	8	9	10	11

### Reply structure

Name	Header	Length	ID 1	ID 2	Command Type	CR
Bytes order	1	2	3	4	5	6

For example, say a MondoPad you want to change the source to HDMI 2:



If you send an invalid command or value, you will get the Invalid response 35 36 30 30 2D 0D.

In the table below the commands are alternated in gray/white backgrounds for easy readability.

Commands with a value of "XXX" have a range of possibilities which are listed in the Set Command Column (example, Brightness has possible values of 000 – 100 (30 30 30 – 31 30 30))

***\*Some commands will only work on specific models***

Set Command	ASCII Character											HEX											
	Header	Length	ID1	ID2	Command Type	Command 1	Command2	Value1	Value2	Value3	CR	Header	Length	ID1	ID2	Command Type	Command 1	Command2	Value1	Value2	Value3	CR	
Power Off	5	b	0	0	1	0	0	0	0	0	CR	35	62	30	30	31	30	30	30	30	30	30	0D
Power On	5	b	0	0	1	0	0	0	0	1	CR	35	62	30	30	31	30	30	30	30	30	31	0D
Input - HDMI1	5	b	0	0	1	0	1	0	0	0	CR	35	62	30	30	31	30	31	30	30	30	30	0D
Input - HDMI2	5	b	0	0	1	0	1	0	0	1	CR	35	62	30	30	31	30	31	30	30	30	31	0D
Input - HDMI3	5	b	0	0	1	0	1	0	0	2	CR	35	62	30	30	31	30	31	30	30	30	32	0D
Input - HDMI4	5	b	0	0	1	0	1	0	0	4	CR	35	62	30	30	31	30	31	30	30	30	34	0D
Input - Lightcast	5	b	0	0	1	0	1	0	0	7	CR	35	62	30	30	31	30	31	30	30	30	37	0D
Input - Mondopad	5	b	0	0	1	0	1	0	0	9	CR	35	62	30	30	31	30	31	30	30	30	39	0D
Input - VGA	5	b	0	0	1	0	1	0	0	3	CR	35	62	30	30	31	30	31	30	30	30	33	0D
Input - YPbPr	5	b	0	0	1	0	1	0	0	6	CR	35	62	30	30	31	30	31	30	30	30	36	0D
Input - AV	5	b	0	0	1	0	1	0	0	8	CR	35	62	30	30	31	30	31	30	30	30	38	0D
Audio Input - Audio 1	5	b	0	0	1	0	2	0	0	0	CR	35	62	30	30	31	30	32	30	30	30	30	0D
Audio Input - Audio 2	5	b	0	0	1	0	2	0	0	1	CR	35	62	30	30	31	30	32	30	30	30	31	0D
Audio Input - HDMI 1	5	b	0	0	1	0	2	0	0	3	CR	35	62	30	30	31	30	32	30	30	30	33	0D
Audio Input - HDMI 2	5	b	0	0	1	0	2	0	0	4	CR	35	62	30	30	31	30	32	30	30	30	34	0D
Audio Input - HDMI 3	5	b	0	0	1	0	2	0	0	5	CR	35	62	30	30	31	30	32	30	30	30	35	0D
Audio Input - HDMI 4	5	b	0	0	1	0	2	0	0	7	CR	35	62	30	30	31	30	32	30	30	30	37	0D
Audio Input - Lightcast	5	b	0	0	1	0	2	0	0	8	CR	35	62	30	30	31	30	32	30	30	30	38	0D
Audio Input - Mondopad	5	b	0	0	1	0	2	0	0	6	CR	35	62	30	30	31	30	32	30	30	30	36	0D
Keyboard Control Disable	5	b	0	0	1	0	3	0	0	0	CR	35	62	30	30	31	30	33	30	30	30	30	0D
Keyboard Control Enable	5	b	0	0	1	0	3	0	0	1	CR	35	62	30	30	31	30	33	30	30	30	31	0D
Brightness, 000~100	5	b	0	0	1	1	0	X	X	X	CR	35	62	30	30	31	31	30	X	X	X	0D	
Contrast, 000~100	5	b	0	0	1	1	1	X	X	X	CR	35	62	30	30	31	31	31	X	X	X	0D	
Sharpness, 000~100	5	b	0	0	1	1	2	X	X	X	CR	35	62	30	30	31	31	32	X	X	X	0D	
Color Temperature - Native	5	b	0	0	6	0	0	0	0	0	CR	35	62	30	30	36	30	30	30	30	30	30	0D
Color Temperature - 6500K	5	b	0	0	6	0	0	0	0	1	CR	35	62	30	30	36	30	30	30	30	30	31	0D
Color Temperature - 9300K	5	b	0	0	6	0	0	0	0	2	CR	35	62	30	30	36	30	30	30	30	30	32	0D
Color Temperature - User	5	b	0	0	6	0	0	0	0	3	CR	35	62	30	30	36	30	30	30	30	30	33	0D
Color Control Red, 000~100	5	b	0	0	6	0	1	X	X	X	CR	35	62	30	30	36	30	31	X	X	X	0D	
Color Control Green, 000~100	5	b	0	0	6	0	2	X	X	X	CR	35	62	30	30	36	30	32	X	X	X	0D	
Color Control Blue, 000~100	5	b	0	0	6	0	3	X	X	X	CR	35	62	30	30	36	30	33	X	X	X	0D	
Picture Mode - Standard	5	b	0	0	6	0	4	0	0	0	CR	35	62	30	30	36	30	34	30	30	30	30	0D
Picture Mode - HighBright	5	b	0	0	6	0	4	0	0	1	CR	35	62	30	30	36	30	34	30	30	30	31	0D
Picture Mode - Soft	5	b	0	0	6	0	4	0	0	2	CR	35	62	30	30	36	30	34	30	30	30	32	0D
Picture Reset	5	b	0	0	6	0	5	0	0	1	CR	35	62	30	30	36	30	35	30	30	30	31	0D
Aspect Ratio - Wide	5	b	0	0	6	0	6	0	0	0	CR	35	62	30	30	36	30	36	30	30	30	30	0D
Aspect Ratio - 4:3	5	b	0	0	6	0	6	0	0	1	CR	35	62	30	30	36	30	36	30	30	30	31	0D
Screen Reset	5	b	0	0	6	0	7	0	0	1	CR	35	62	30	30	36	30	37	30	30	30	31	0D
HPosition, 000~100	5	b	0	0	6	0	8	X	X	X	CR	35	62	30	30	36	30	38	X	X	X	0D	
Vposition, 000~100	5	b	0	0	6	0	9	X	X	X	CR	35	62	30	30	36	30	39	X	X	X	0D	
Clock, 000~100	5	b	0	0	6	1	0	X	X	X	CR	35	62	30	30	36	31	30	X	X	X	0D	
Clock Phase, 000~100	5	b	0	0	6	1	1	X	X	X	CR	35	62	30	30	36	31	31	X	X	X	0D	

Gamma - Native	5	b	0	0	1	1	c	0	0	0	CR	35	62	30	30	31	31	63	30	30	30	0D
Gamma - 2.2	5	b	0	0	1	1	c	0	0	1	CR	35	62	30	30	31	31	63	30	30	31	0D
Gamma - 2.4	5	b	0	0	1	1	c	0	0	2	CR	35	62	30	30	31	31	63	30	30	32	0D
Volume, 000~100	5	b	0	0	1	5	0	X	X	X	CR	35	62	30	30	31	35	30	X	X	X	0D
Volume +1	5	b	0	0	6	1	2	0	0	0	CR	35	62	30	30	36	31	32	30	30	30	0D
Volume -1	5	b	0	0	6	1	3	0	0	0	CR	35	62	30	30	36	31	33	30	30	30	0D
Speaker Internal	5	b	0	0	1	5	4	0	0	0	CR	35	62	30	30	31	35	34	30	30	30	0D
Speaker External	5	b	0	0	1	5	4	0	0	1	CR	35	62	30	30	31	35	34	30	30	31	0D
Audio Reset	5	b	0	0	6	1	4	0	0	1	CR	35	62	30	30	36	31	34	30	30	31	0D
Mute Off	5	b	0	0	1	5	5	0	0	0	CR	35	62	30	30	31	35	35	30	30	30	0D
Mute On	5	b	0	0	1	5	5	0	0	1	CR	35	62	30	30	31	35	35	30	30	31	0D
Language - English	5	b	0	0	6	1	8	0	0	0	CR	35	62	30	30	36	31	38	30	30	30	0D
Language - Chinese	5	b	0	0	6	1	8	0	0	1	CR	35	62	30	30	36	31	38	30	30	31	0D
Configuration Reset	5	b	0	0	6	1	9	0	0	1	CR	35	62	30	30	36	31	39	30	30	31	0D
Factory Reset	5	b	0	0	6	2	0	0	0	1	CR	35	62	30	30	36	32	30	30	30	31	0D
OSD turn off, 005-120,5	5	b	0	0	6	2	2	X	X	X	CR	35	62	30	30	36	32	32	X	X	X	0D
OSD H-Position, 000~100	5	b	0	0	6	2	3	X	X	X	CR	35	62	30	30	36	32	33	X	X	X	0D
OSD V-Position, 000~100	5	b	0	0	6	2	4	X	X	X	CR	35	62	30	30	36	32	34	X	X	X	0D
Overscan - OFF	5	b	0	0	6	2	6	0	0	0	CR	35	62	30	30	36	32	36	30	30	30	0D
Overscan - ON	5	b	0	0	6	2	6	0	0	1	CR	35	62	30	30	36	32	36	30	30	31	0D
DDC/DDI - OFF	5	b	0	0	6	2	7	0	0	0	CR	35	62	30	30	36	32	37	30	30	30	0D
DDC/DDI - ON	5	b	0	0	6	2	7	0	0	1	CR	35	62	30	30	36	32	37	30	30	31	0D
Advanced Option Reset	5	b	0	0	6	2	8	0	0	1	CR	35	62	30	30	36	32	38	30	30	31	0D
Autosource OFF	5	b	0	0	6	2	9	0	0	0	CR	35	62	30	30	36	32	39	30	30	30	0D
Autosource ON	5	b	0	0	6	2	9	0	0	1	CR	35	62	30	30	36	32	39	30	30	31	0D
USBHub-Auto	5	b	0	0	6	4	0	0	0	0	CR	35	62	30	30	36	34	30	30	30	30	0D
USBHub-Lightcast	5	b	0	0	6	4	0	0	0	1	CR	35	62	30	30	36	34	30	30	30	31	0D
USBHub-External	5	b	0	0	6	4	0	0	0	2	CR	35	62	30	30	36	34	30	30	30	32	0D
Screen Freeze - ON	5	b	0	0	6	5	0	0	0	1	CR	35	62	30	30	36	35	30	30	30	31	0D
Screen Freeze - OFF	5	b	0	0	6	5	0	0	0	0	CR	35	62	30	30	36	35	30	30	30	30	0D
Blank - ON	5	b	0	0	6	6	0	0	0	1	CR	35	62	30	30	36	36	30	30	30	31	0D
Blank - OFF	5	b	0	0	6	6	0	0	0	0	CR	35	62	30	30	36	36	30	30	30	30	0D
Dimming - 10%	5	b	0	0	6	7	0	0	0	0	CR	35	62	30	30	36	37	30	30	30	30	0D
Dimming - 30%	5	b	0	0	6	7	0	0	0	1	CR	35	62	30	30	36	37	30	30	30	31	0D
Dimming - 70%	5	b	0	0	6	7	0	0	1	0	CR	35	62	30	30	36	37	30	30	31	30	0D
Dimming - 100%	5	b	0	0	6	7	0	0	1	1	CR	35	62	30	30	36	37	30	30	31	31	0D